

Geospiza FinchLab™ for Genetic Analysis

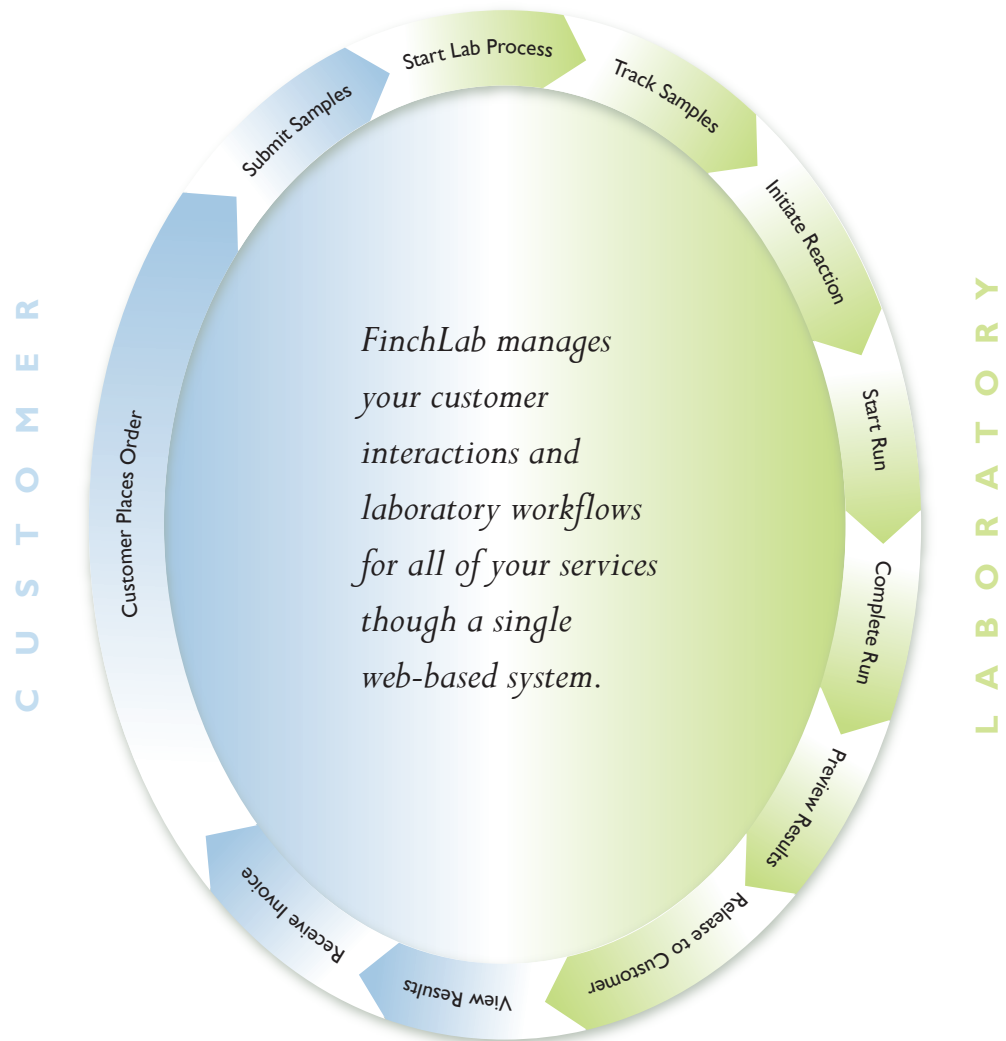
FinchLab is an out-of-the-box lab management system with intelligent workflows that help you get started immediately and the flexibility to adapt to your specific needs without custom programming.

Supported Services

- DNA Sequencing
- Gene Expression
- Genotyping Assays
- ChIP Assays
- Fragment Analysis
- Resequencing

Key Capabilities

- Workflow Management
- Data Management
- Quality Control
- Reporting
- Customer Interaction
- Ordering
- Invoicing
- Role-based Security
- Third-party integration

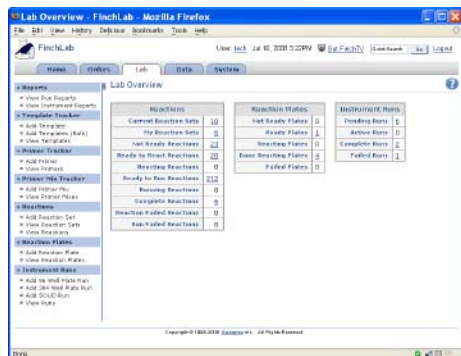


Setup and Deploy Quickly with Intelligent, Pre-configured Workflows

Customer Centric Workflows

FinchLab provides pre-configured workflows for services like DNA Sequencing and Fragment Analysis - that can start at any entry point, such as Run Ready or Reaction Ready.

These workflows can be tailored to a specific service or entry point to accommodate your needs. For example, one customer adapted the standard sequencing process to address a microarray protocol needed for one of their projects - configuring the entry point to address the standard level of preparation common in their lab environment.



You can see all active reactions, reaction plates and instrument runs through the lab overview screen - with single click navigation to additional details

Flexible Workflows

FinchLab provides tools to manage workflows from order, to sample prep, into an instrument run through data acquisition and distribution. These workflows are pre-configured to reflect best practices out-of-the-box, accelerating the learning curve on new technologies and methods. In addition to the pre-configured workflows provided, FinchLab includes tools that offer complete flexibility to adapt workflows to accommodate specialized services and lab-defined steps without custom programming or consultants. So, you can get started quickly with a system that will evolve to meet your needs as your services and lab expand.

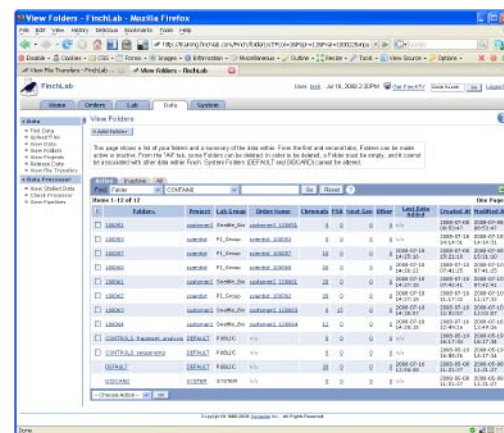
Through a single dashboard view, you can view all laboratory operations and assigned work - and then take the steps to assign and track tasks to optimize productivity. You control the process from sample to results.

Electronic Notebook

Just as you have tracked laboratory processes on paper, you can now use the web-based FinchLab system as an electronic notebook as you go through your laboratory processes. Collaboration features ensure that everyone in the lab is on the same page and able to communicate across shifts and projects. Enter notes and check for special instructions through this critical lab communication tool with full search capabilities.

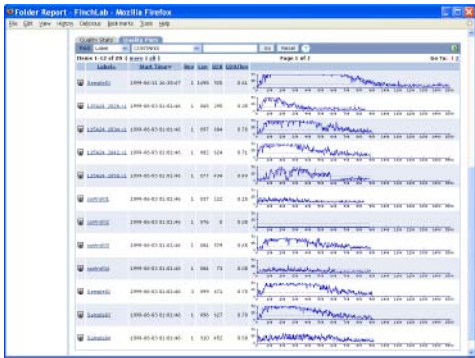
Data Management

In addition to tracking process information within a workflow, FinchLab offers a comprehensive system to manage the resulting data files. FinchLab organizes your data in an intuitive way so that you can access, view and download data in standard formats (e.g. FASTA) to quickly reference and analyze results. In addition to your genetic analysis data, FinchLab provides the ability to store any type of file (i.e. .pdf, .xls, etc.) so that you can manage your projects, folders and data in a way that makes the most sense to you.



View and manage your data by folder, project and order.

Quality Control and Data Review Provide a Clear Line of Sight



View thumbnail quality information before releasing data to your customers

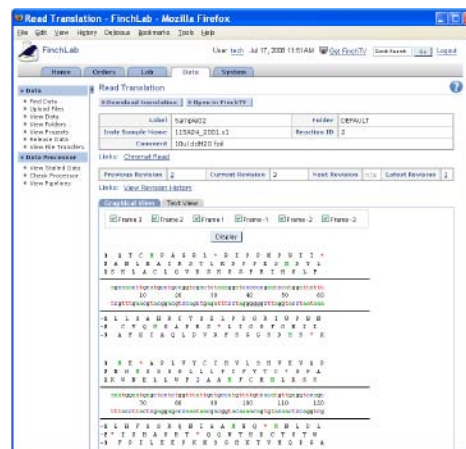
Quality Control and Reporting

FinchLab provides integrated features to control quality proactively - to ensure that your customers see the results you want them to view. The hold-before-release option allows you and your team to review data prior to releasing it to customers. At this stage, you can repeat the samples any number of times and track all of the data. You decide which data to release to your customers. Thumbnail quality pictures can be seen in a quick view display for quality review and statistics. If quality issues are identified, data can be edited in real-time with revision tracking available for reference.

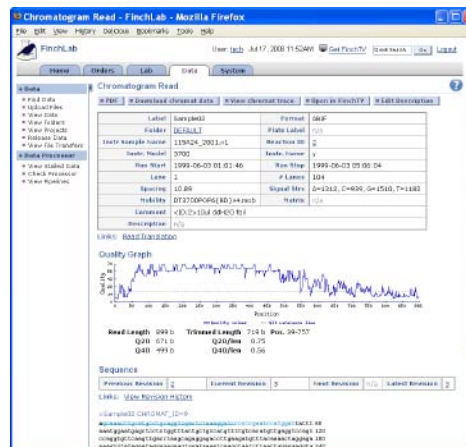
See where gaps in quality originate, through reports by user, groups, instruments, etc. Quality information helps catch errors in ongoing processes proactively, controlling costs by reducing rework and retesting of samples. Then share those views through the web based interface to proactively manage quality risks before they occur.

Data Quality Review

In addition to the quality control methods available to lab management, the end-user or researcher is able to view data quality to facilitate initial analysis and evaluation of the sample results. These views can be shared with the lab or with colleagues for further discussion. Data views include enhanced quality review and statistics that are available with thumbnail quality pictures in a quick edit view.



Graphical Views of Read Translations



Chromatogram Read Details

Key Security Features

- Maintain data security with role-based access
- Data encryption
- Individual password protected accounts

Compliance

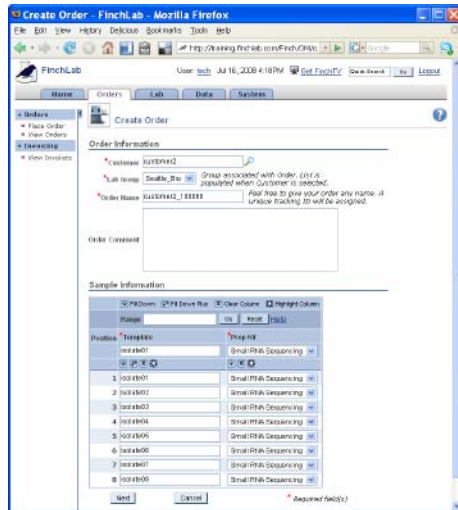
- Supports GLP, GMP and 21 CFR Part 11 compliance requirements

Simplify Core Lab Operations with Adaptable Order Forms and Effortless Billing

Ordering that Adapts to Your Lab

These order forms can be tailored to both the specific technology and to the appropriate workflow for your services - automatically collecting the specific information you need.

These forms are not only easy to use, but also simplify lab operations. For example, one customer was even able to introduce new services after the implementation of FinchLab, when they realized that it was possible to introduce those new services without additional complexity in operations, pricing and billing.



Without programmers, orders can be customized with laboratory defined instructions and easy-to-use controls

Simplify Order Management

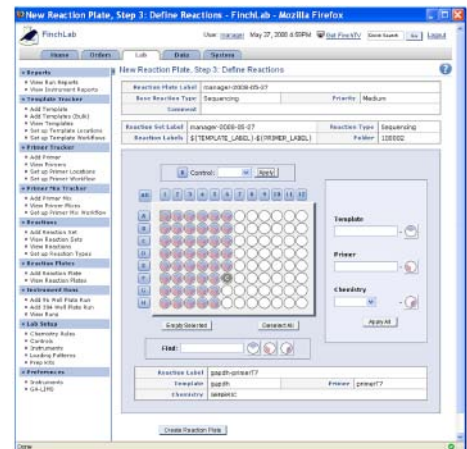
FinchLab's online ordering system provides pre-configured, professional and customizable forms, which reflect best practices yet enable labs to tailor standard forms for specialized services without programmers. Integrated order tracking makes it possible to combine samples from multiple orders, while preserving individual order and billing information. There is also a convenient dashboard to check status on all orders as well as easy access to all order information and details.

Complex accounting requirements and diverse payment methods are easy to accommodate with FinchLab. Individual payment information specific to your customers' and to your accounting department's requirements can be effortlessly included without custom programming. In addition to transactional invoicing, monthly or quarterly billing summaries can be provided to your customers.

Customer Relationship Management

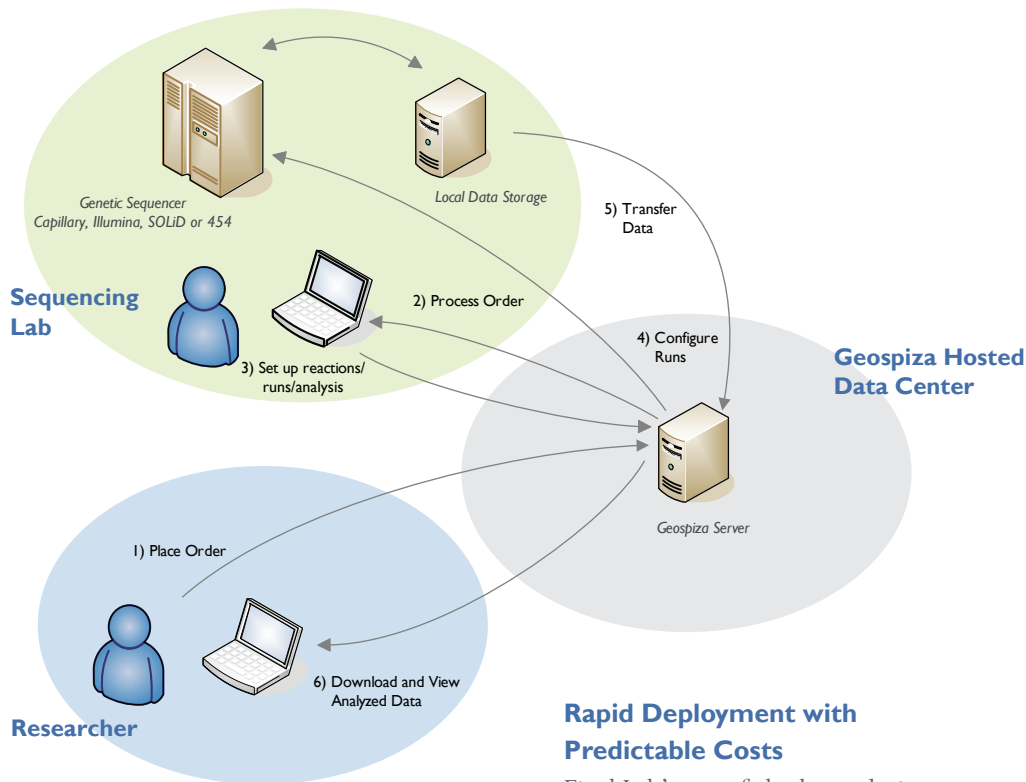
Never receive another phone call asking about an order. With FinchLab, you can go from reactive to proactive customer relationship management. FinchLab helps you manage customer relationships in real time and historically, with archived customer communication stored in an easily accessible format. In addition to the hold before release option that gives you and your team the opportunity to review data before delivering files to your customers, you have the ability to comment on the data you decide to share with your customer.

To keep your customers updated on the status of their order, you can send customers automated notifications via email at any stage of processing. Your customers will also be provided with a secure web interface to place orders, and download data, individual files or an entire folder of data in multiple formats for downstream analysis.



Define sequencing reactions as well as position on plate

SaaS Model Offers Predictable Costs and Rapid Deployment



Focus on the Science

An ever increasing demand for genetic analysis has created unprecedented volumes in the operational load of service laboratories. The FinchLab system takes care of order management, invoicing and data delivery, eliminating stress on internal resources and infrastructure. Geospiza's hosted solution provides IT infrastructure and support to enable labs and their customers to focus on the science.

Rapid Deployment with Predictable Costs

FinchLab's out-of-the-box solution can deploy within 24 hours. In addition to this rapid initial deployment, updates to address new technologies are included with a product subscription - and can be deployed as quickly.

Our hosted model pricing significantly lowers upfront capital costs that are typical with commercial enterprise LIMS systems. Labs can scale capacity predictably and manage their costs effectively as their business grows. Geospiza's hosted pricing includes software maintenance and upgrades to eliminate unplanned costs or the need to forgo features based on cost.

Supported Platforms

Applied Biosystems:

- Capillary Electrophoresis and SOLiD Sequencers

Illumina:

- Genome Analyzer and iScan System for BeadArrays

Roche:

- Genome Sequencer FLX™ System and NimbleGen Array System

Affymetrix:

- GeneChip Microarray System

Helicos:

- Single Molecule Sequencer

Supported Browsers

- Firefox
- Internet Explorer
- Safari