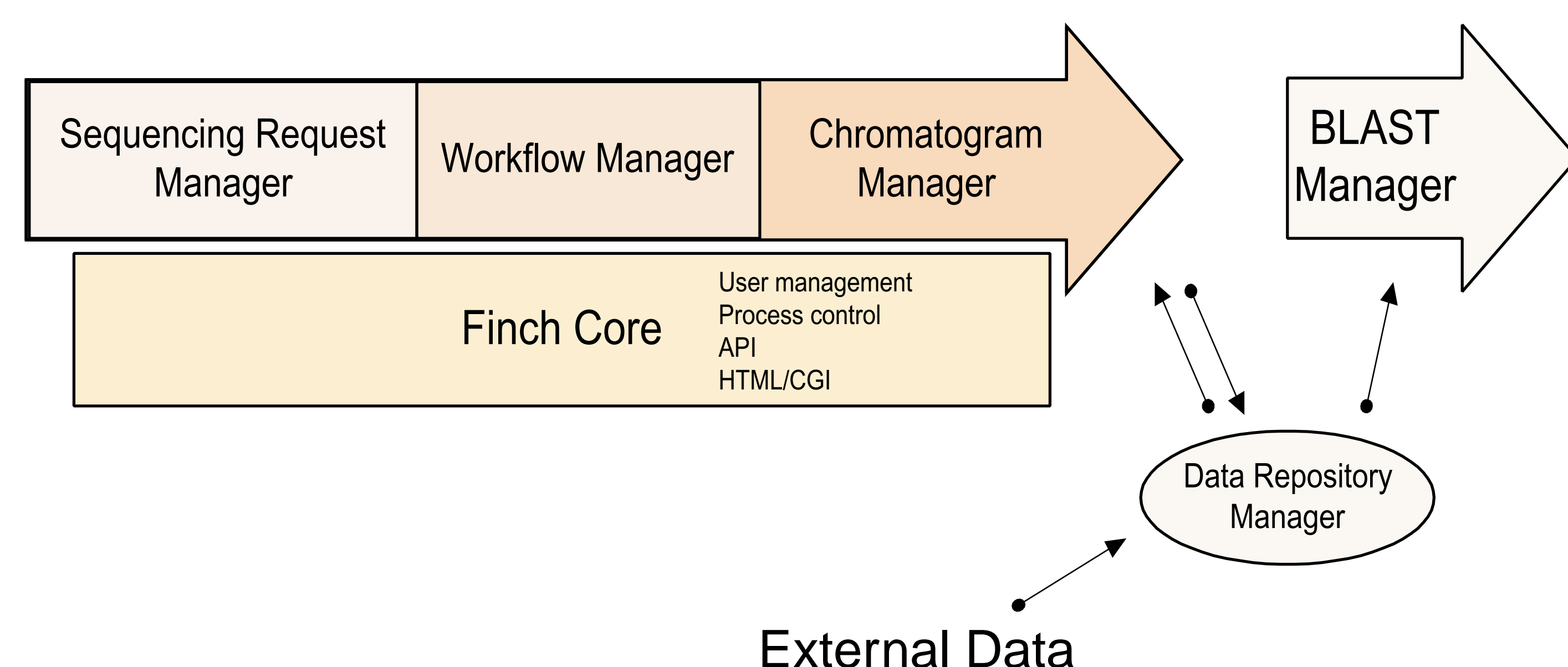




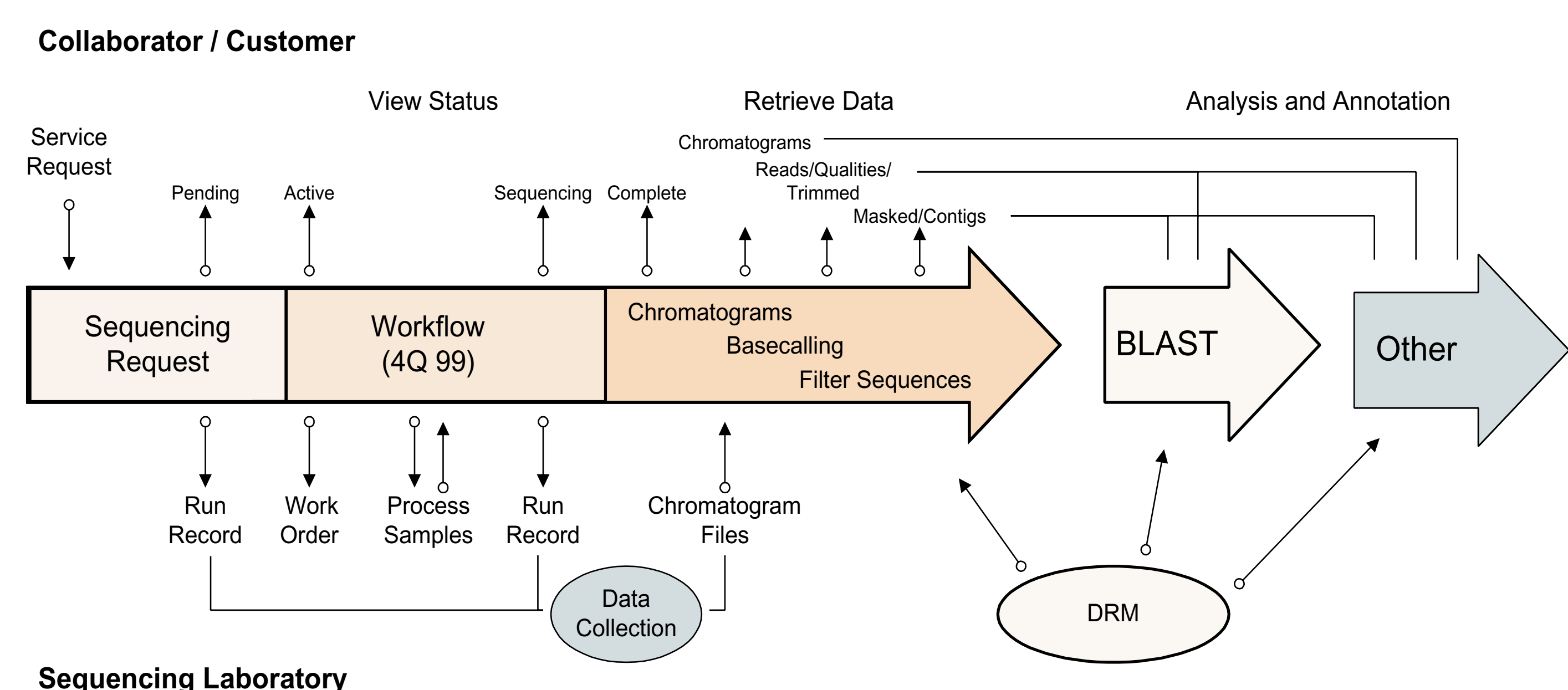
619 N 35th St. STE 101M
Seattle, WA 98103
(206) 633-4403
www.geospiza.com

Geospiza's *Finch™-Suite* of bioinformatics software components provides a complete, integrated data management solution for DNA sequencing laboratories.

Finch™-Suite Architecture

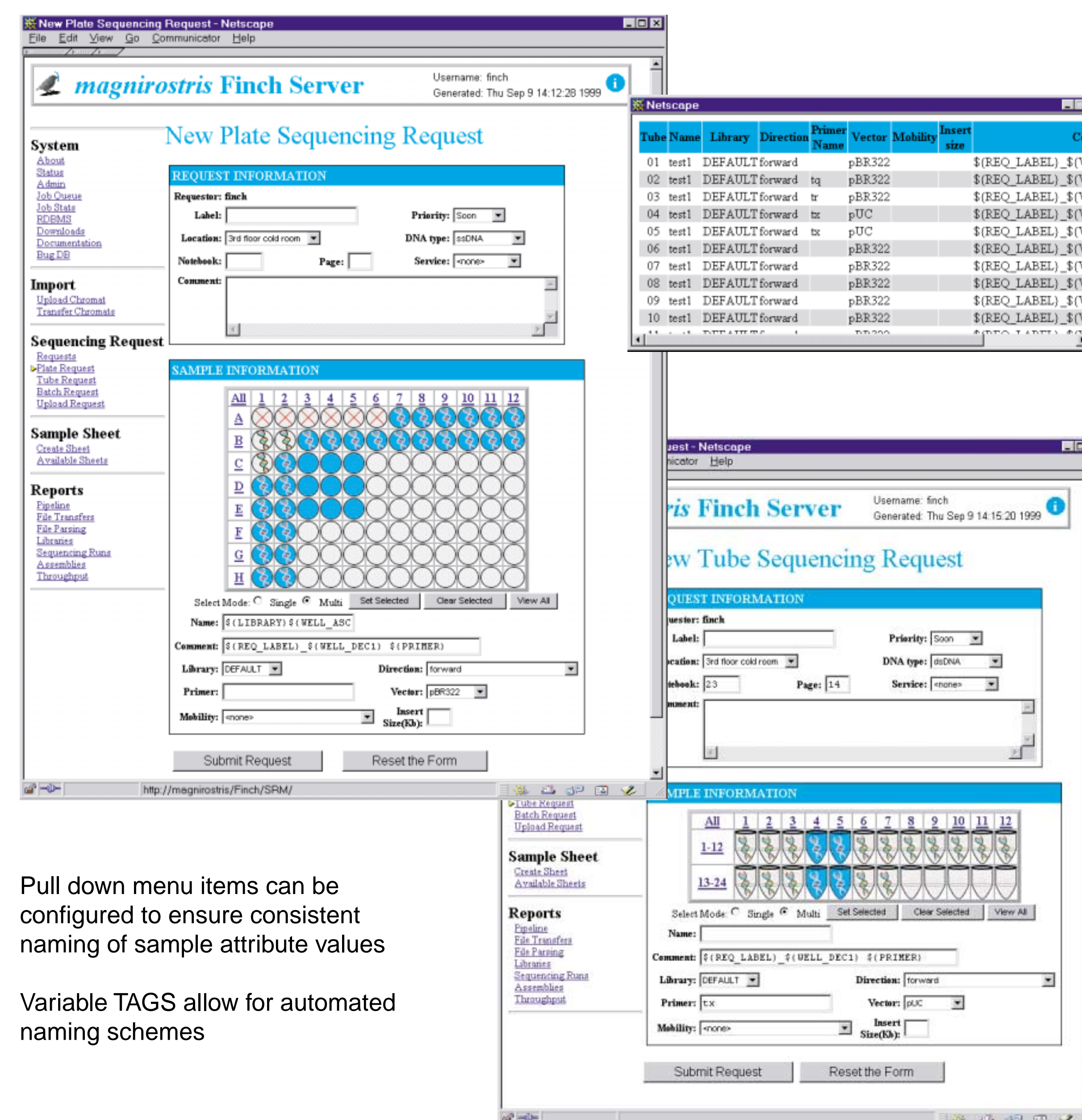


Overview of Finch™-Server Activities and Information Flow



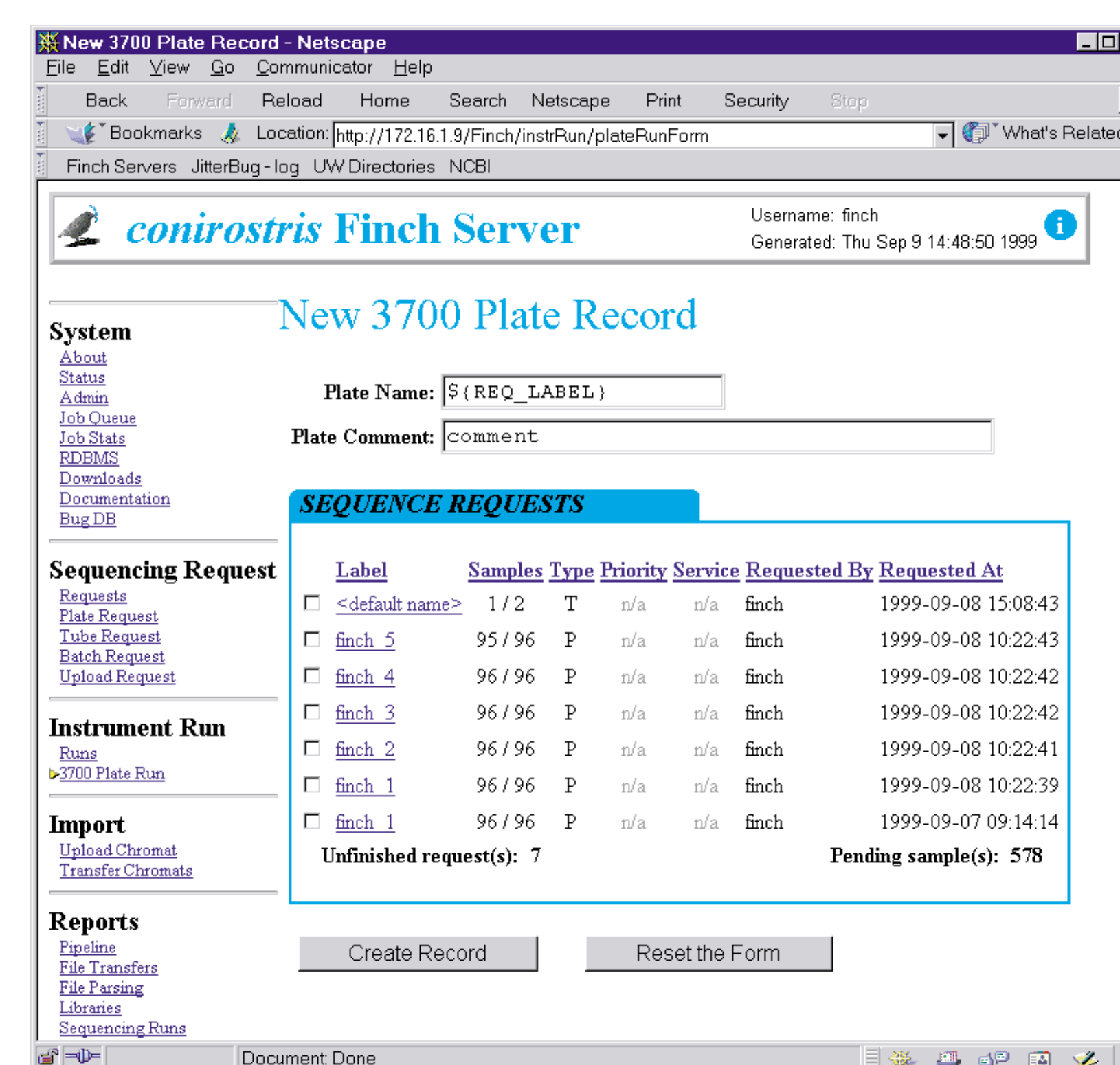
Together the *Finch™-Sequencing Request Manager* (SRM) and *Chromatogram Manager* (CM) offer a complete solution for sample information data entry linking a samples information to its resulting chromatogram file. These components support ABI-373, 377 and 3700 sequencing instruments; others are planned in the future. The CM encapsulates the phred base calling algorithm (Ewing, et al. 1998, Genome Research) for data quality analysis and uses cross_match (P. Green, unpublished) to identify sequence contaminants. Chromatogram files and sequence data are viewed and exported from the CM by secure user accounts in a variety of file formats to support downstream analysis with additional *Finch™-Suite* components or third party software.

The SRM provides four interfaces to make sequencing requests and enter sample information: 1. 96-well plate, 2. tubes, 3. batches of 96-well plates (not shown), 4. uploading a tab delimited file (not shown).



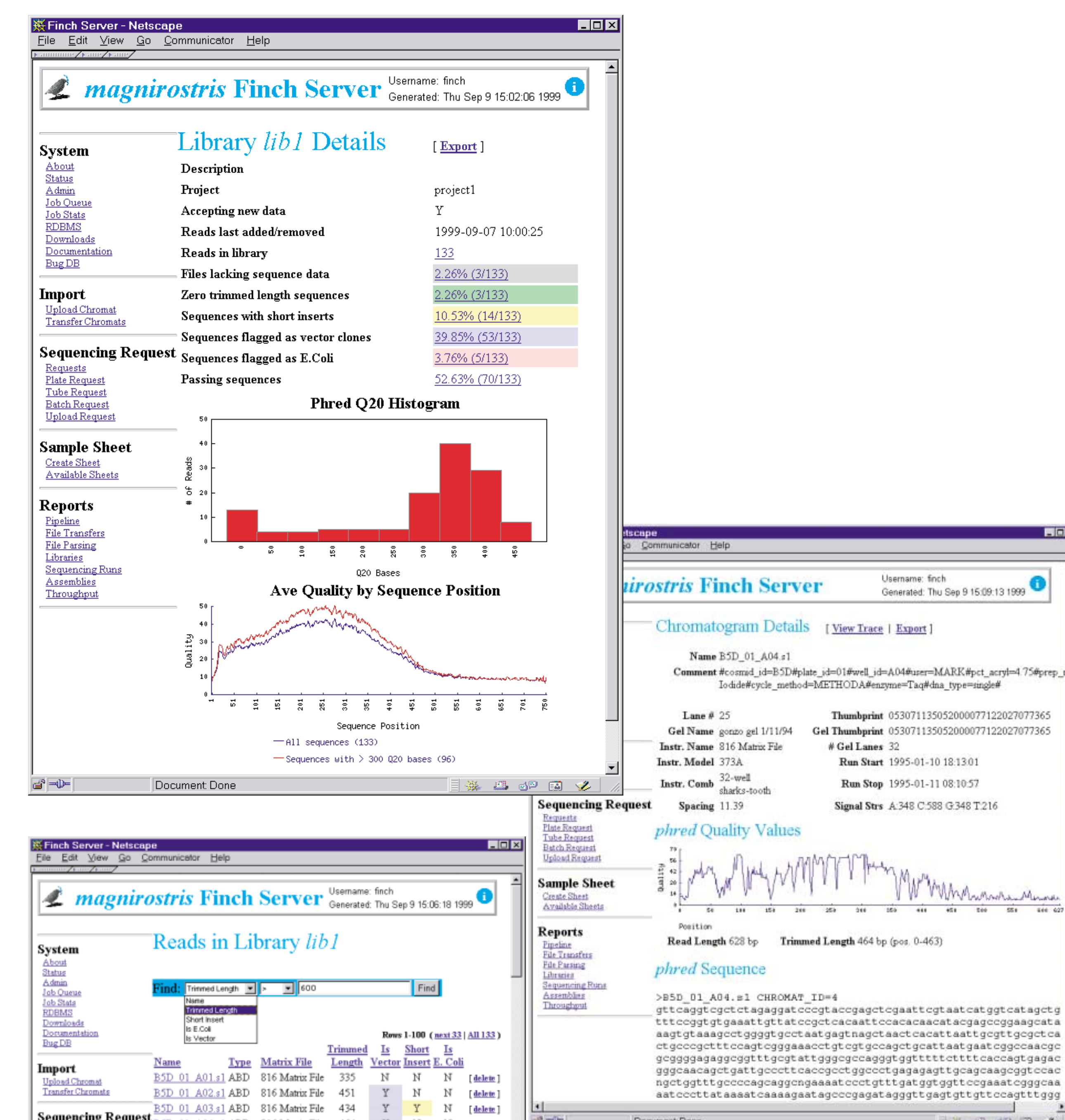
Pull down menu items can be configured to ensure consistent naming of sample attribute values

Variable TAGS allow for automated naming schemes



Sample Sheets and plate records can be generated from multiple requests. Sample sheets can also be configured for different loading patterns to accommodate multi-channel pipettors.

Data stored in the CM Manager are analyzed for quality and common laboratory contaminants. Data can be exported individually and in batch with poor quality and vector regions removed.



Company Overview

Geospiza Inc. has provided bioinformatics software, systems, and services to corporate and academic laboratories across the United States since 1997. The company sells the *Finch™-Suite* of bioinformatics components that includes the *Finch™-Sequencing Request Manager*, the *Finch™-Chromatogram Manager*, the *Finch™-BLAST Manager*, and the *Finch™-Data Repository Manager*.